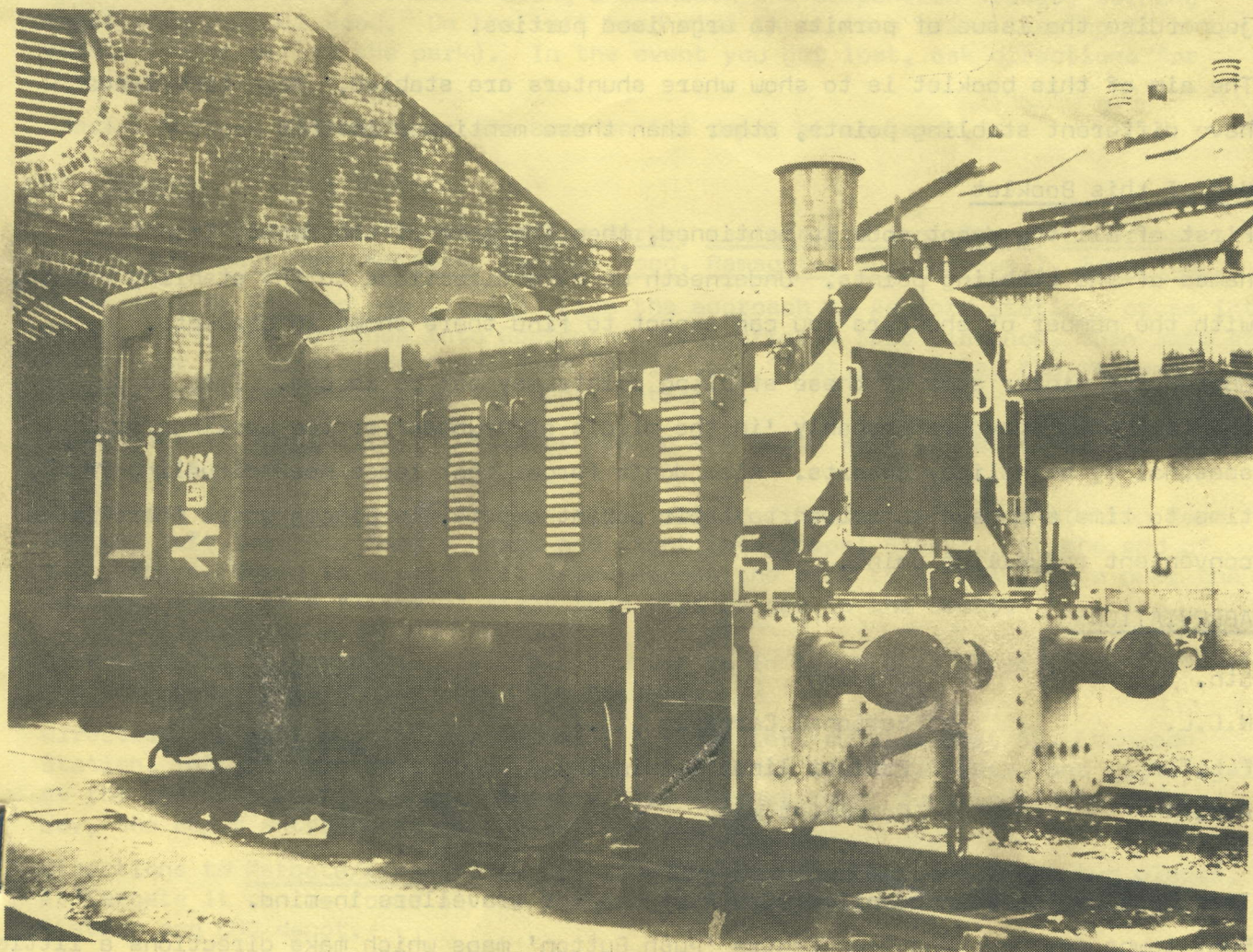


NORTHERN COUNTIES TRANSPORT SOCIETY



SHUNTER STABLING POINT BOOK COMPLETE WITH DIRECTIONS

WHERE THE ! * ! * ! ARE THEY

PRICE 20p

PRINTED & PUBLISHED BY N.C.T.S. 44, STANWELL ROAD, SWINTON, MANCHESTER, M27 1TD.

INTRODUCTION

THE N.C.T.S., WOULD LIKE TO MAKE PLAIN THE FACT THAT NO AUTHORISATION IS GIVEN BY THEM TO VISIT ANY OF THE DEPOTS OR STABLING POINTS, NOR DOES IT ISSUE PERMITS FOR THESE DEPOTS AND STABLING POINTS, NOR IS THIS BOOKLET ANY AUTHORITY.

THIS BOOKLET IS FOR REFERENCE ONLY !

Permits should be obtained where ever possible from Area, or Works Managers. Visits to Dock installations should be accompanied by a permit from the Harbour Authority concerned.

Persons to attempt to 'Bunk' depots may be liable to prosecution, and could also jeopardise the issue of permits to organised parties.

The aim of this booklet is to show where shunters are stabled. Main line locos have different stabling points, other than those mentioned in this book.

Use of this Booklet

First of all the depot code is mentioned, then the name of the depot, then the names of the stabling points. Underneath we give directions to the stabling points, with the number of shunters you can expect to find there shown in brackets.

During the winter some of these stabling points may not be in use. This is due to the fact that they are probably 'in the middle of nowhere' or the workings are seasonal eg at Holiday Resorts. Also don't forget that locos need refueling from time to time and have to return to their parent depots, in places where there is no convenient refuelling point.

ABBREVIATIONS

Stn.	Station
N.C.L.	National Carriers Ltd.,
F.L.T.	Freight liner Terminal
P.W.	Permanent Way

This booklet has been compiled with Rail and Car travellers in mind.

Most towns now have the Town Centre 'Push Button' maps which make directions a little clearer. Where a great deal of mileage is shown, it may sometimes be necessary to use Public Transport. As far as we know the majority of depots are on bus routes, enquiries regarding transport should be made in the main towns mentioned in this booklet.

INTRODUCTION CONTINUED :- The number of shunters is now indicated in brackets.

Since this booklet first appeared, when the front covers were all printed, a new edition has been compiled to include directions.

This is because many stations close on Sundays, the day when it seems most loco spotters are out spotting.

In this edition we have given the nearest MAIN road number to the position of the depot, where cleared directions are not possible.

AB ABERDEEN

The stabling points are the Station (2) and the Docks (1)

Directions to the Depot from Aberdeen Station:- Turn left out of the station yard, up the hill, and turn left at the top Colledge Street, continue down the hill, (approx. 500 yds) and bear left underneath the railway bridge, turn right along North Esplanade West, continue along underneath the suspension bridge, turning right into Polmuir Road. On the left hand side there is a drive leading to the depot, (--just before the park). In the event you get lost, ask directions for Duthie Park.

Special Note:- All shunters are back on the depot at weekends.

AF ASHFORD

The Stabling points are Ashford Works, Ashford Station, Dover, Faversham, Folkestone, Hastings, Margate, Paddock Wood, Ramsgate, Shepherdswell, Tonbridge.

Directions to Ashford Depot:- (3) From the approach to Ashford Station, cross into Elwick Road, and continue into Godington Road, after a fair distance, turn left at the end of the road, into Chart Road (A28), turn first left after the railway bridge, and first left again for depot entrance.

Directions to Dover:- (4) The locos are on the South side of the line, West of Dover Marine Station.

Directions to Faversham:- (1) Turn right outside the Station along station Road turning left into St. Mary's Road, and right into Chapel Street, At the end of this street, there is a path that leads across the park to a foot bridge over the railway, there is a flight of steps from this bridge to the depot.

Directions to Folkestone:- (1) This shunter is in the N.C.L. Depot yard, most of the time but, occasionally works the harbour.

Directions to Hastings (St. Leonards) (1) Turn left outside West St. Leonards Station, into St. Vincents Road, turning right into West Hill Road, and right again at the end into Bexhill Road. About a mile further down, turn left into Bridge Way, the depot entrance is on the left hand side.

Directions to Margate/Ramsgate :- (1) The loco is shared between these two places, At Margate it can be found at the Station, at Ramsgate in the yard next to the Station and EMU depot.

Directions to Paddock Wood:- (1) and Shepherdswell (1) Both these locos are stabled at there respective Stations.

Directions to Tonbridge:- (2) Turn right out of Tonbridge Station and first left by the side of the railway coal yard. The entrance to this yard is about 200 yds down, on the left, where you will find one shunter. The other one is located along with main line locos in the North yard, turn left out of the station, and first left again, follow this road into the estate for about $\frac{1}{2}$ mile, there is a path between the houses which crosses some lines, follow this to the yard.

AN ALLERTON

The stabling points are Alexandra Dock, Canada Dock, Ditton Junc., Edge Hill, Fazackerly, Glazebrook, Halewood, Lime Street Stn., Northwich, Runcorn, Warrington Central Stn., Widnes, Winsford.

Directions to Allerton Depot:- (6) Turn right outside Allerton Station, The shed entrance is a drive on the right hand side, just before the Allerton Arms Pub. From the City Centre, follow signs for Speke Airport, taking the A562 until it crosses Queens Drive, turning down Mather Ave., ie B5180.

Directions for Alexandra Dock/Canada Dock:- (1) & (2) From the Pier Head, go down Waterloo Road, which is the A5036, and come back down Primrose Rd/Derby Rd/Great Howard Street, ie A565, these two roads take in all the docks complex area, where the locos can be found.

Directions to Ditton Junc.:- (1) The loco can be seen from the A562 with Binoculars only. This loco can not usually be seen from the train. Situated approx 12 miles from the City Centre.

Directions to Edge Hill:- (3) From the City Centre, turn right out of Lime Street Stn., turning right again into London Road, fork right at the road junction into Pembroke place, continuing into Derby St., keep to the right all the way until the road changes to Irvine St., then Wavertree Rd., which changes again into Pickton Rd. Turn left just after the railway over-bridge, into Tiverton St., a path leads from the end of this street to the depot.

Directions to Fazackerly:- From the City Centre take the A59 Ormskirk Rd., until you reach Longmore Lane ie B5192, about a mile down on the left hand side is Fazackerly Stn., turn second left down Signal Works Rd., there is a foot bridge at the end of this road which crosses the lines, locos can be seen from this bridge.

Directions for Glazebrook:- (1) From Warrington take the A57 towards Manchester, about five or six miles down this Road in Cadishead, turn left after the Coach and Horses Pub into Fir Street, the loco can be seen on the right hand side near the top of the street, between the houses.

Directions for Halewood:- (1) An Allerton based shunter is on permanent loan to 'Fords' of Halewood, not usually seen until the locos change over for maintenance.

Directions for Runcorn:- (1) This loco is stabled in Runcorn Stn., and it works the dock area. Runcorn is on the A533.

Directions for Northwich:- (3) From the station turn left over the railway, the depot entrance is on the left hand side, just before the houses. Northwich is on A533/B5082, about 12 miles from Runcorn.

Directions for Warrington:- (1) Warrington Central Stn., is on the A49 just out of the Town Centre, heading towards Wigan.

Directions for Widnes:- (2) These locos can be seen from Desoto Road East, which is first left off the A533 Runcorn Bridge Road, from the directions of the A562, which is the main road to Liverpool.

Directions for Winsford:- (1) This loco works on the I.C.I. works, on the A54 about 10 miles N.W. of Crewe.

AY AYR

The Stabling Points are Ardrossan, Auchinleck, Barrasie Waggon Works, Irvine, Kilmarnock, Kilwinning, Glengarnock.

Directions to Ayr depot:- (2) Turn right outside Newton-on-Ayr Station into Falkland Park Road, turning right again along Prestwick Road, fork left into Allison St., and turn left into View Field Road. A foot bridge leads to the depot on the left side of the road.

Directions to Ardrossan:- (3) Follow the signs for the Belfast Ferry the locos are stabled alongside the road in the harbour.

Directions to Auchinleck:- (1) The depot is approximately 10 miles East of Ayr. Take the A70 out of Ayr to the junction of the B7036 at Auchiltree, where this road meets the A76, turn left into the town, the loco is stabled at the station.

Directions for Barrassie Waggon Works:- (1) The loco is at the works, just South of Barrassie Stn, on the B746.

Directions to Irvine:- (1) Irvine is 11 miles North of Ayr on the A78. The loco is stabled at the Station.

Directions for Kilmarnock:- (1) Kilmarnock is 10 miles North-East of Ayr, going via the A77. The loco is stabled in the station yard.

Directions to Kilwinning:- (1) Kilwinning is about 12 miles North of Ayr, past Irvine on the A78/A737. The loco is stabled on the station.

Directions for Glengarnock:- (1) Glengarnock is about 18 miles North of Ayr, from Kilwinning, travel North on the A737 into Dalry, take the B780 out of Dalry turning right in Glengarnock town onto the B777, the station is on this road, where the loco is stabled.

BC BIRKENHEAD

The stabling points are Ellesmere Port.

Directions to Birkenhead Depots:- (5) Turn left out of Birkenhead Central Station into Argyle Street South, about half way up the hill turn left into Mollington St., the depot entrance is at the end of the cul-de-sac.

Directions to Ellesmere Port:- (1) The exact location of this shunter is not known presumably it works on the dock area where Vauxhall Motors are.

BG BOTANIC GARDENS (HULL)

The Stabling Points are Paragon Station, Alexandra Dock, King George V Dock, Hessle Yard, Goole,

Directions to Hull Depot:- Turn left out of Hull Station, into Paragon Square, continue into Ferensway, bear left into Spring Bank and turn left into Derringham Street, turn right into Kimberley Street, the depot entrance is at the end. If going by car, there is a one way system in operation, in the streets near to the depot. You should go round the block and come up Derringham Street, to turn right into Kimberley Street.

Paragon Station:- (1) Loco stabled here all the time (Class 03).

Directions for Alexandra Dock:- (3)/King George V Dock:- (3) From Hull Station, go through the town centre via Alfred Gelder Street, Clarence Street, bearing right onto Hedon Road, both these docks are on this road on the right ahnd side. A Dock permit must be obtained to get in to see these locos.

Directions for Hessle Yard:- (3) This stabling point is about 4 miles west of Hull the locos can be seen from the A1105, Hessle Road.

Directions for Goole:- (4) There are Class 03's stabled at Goole Station, other shunters are stabled in the dock area. Go out of Goole Station, cross the main road into arriners Street, after the 4th level crossing turn right. At the bottom of this road a footpath leads to the area where the locos are stabled.

BH BARROW HILL

The stabling Points are Chesterfield,

Directions to Barrow Hill Depot:- The depot is about 4 miles North East of Chesterfield on the A619 at Staveley. In Staveley, follow signs for B.S.C. Works, the depot entrance is under the low railway overbridge, about 100 yds from the works main entrance.

Directions for Chesterfield:- (1) The locos are to be found in the goods yard next to Chesterfield Station, all locos other than 2 class O3's return to the depot at weekends.

BI BRIGHTON

Directions to Brighton:- (-Shunters working here are off Selhurst) Turn right outside the station, along Terminus Road continuing into Howard Place, turning right into New England Road, turn left into York Grove and turn right at the end into Old Shoreham Road. The depot entrance is a gate on the left hand side of this road.

BM BOURNEMOUTH

The stabling points are the Station, Poole, Weymouth.

Directions for Bournemouth Depot:- Turn left outside Branksome Station into Poole Road, turning left into Bourne Valley Road, and right into Princess Road, continue into Prince of Wales Road, turning left into Nelson Road, which is just after the railway bridge, the depot entrance is on the left hand side.

Bournemouth Station:- (1)

Directions to Poole:- (1) This loco works Poole harbour, it is stabled at Poole station, returning to main depot at weekends.

Directions to Weymouth:- (1) Turn right outside Weymouth station into King Street, the locos are stabled in the goods depot, at the end of King Street.

BR BATH ROAD (BRISTOL)

The Stabling Points are Temple Meads Station, the South Yard, Marsh Junction, Avon Mouth Docks, Taunton, Westbury, Radstock, Parkway Tip,

Directions for Bath Road:- Turn left on Bath Road, from the station approach, the depot entrance is on the left hand side just after the railway bridge.

Directions for Temple Meads Station/South Yard/Goods Depots to North of Station. These locos are constantly working in and out of the station, the outside of the main depot can also be seen from the South end of the Station.

Directions for Marsh Junction:- (1) As for the main depot, carrying on along Bath Road bearing left at the roundabout, along Bath Road (A4) the loco can be seen working near the DMU sheds, from this road.

Directions for Avonmouth Docks:- (2) Avonmouth is 5 miles North West of Bristol, the exact workings of these locos is not known.

Directions for Taunton:- (3) Taunton is 44 miles from Bristol on the A38 or Junction 25 on the M5. The locos are stabled in the old steam shed right next to Taunton Station.

Directions for Westbury:- (2) Westbury is approx. 25 miles South East of Bristol, about 4 miles North of Warminster. The locos are stabled at the old steam depot next to the Station.

Directions to Radstock:- (1) Radstock is approx. 8 miles South West of Bath on A367, the loco can be found working the Waggon Works and coal sidings near the town centre.

Directions for Parkway Tip:- (1) The loco can be seen from Bristol Parkway Station
BS BESCOT

The stabling points are Stourbridge, Kidderminster, Wolverhampton-(Various), Wellington, Walsall, Oxley, Wednesbury.

Directions to Bescot Depot:- A path leads off the end of the platform to Bescot Depot, from the Station. The station is well signposted on the A4148. Leave M6 Motorway at junction 9, and head towards Walsall.

Directions for Stourbridge:- (3) The locos are stabled in the yard just to the North of Stourbridge Junction Station. Stourbridge is on the A458 10 miles West of Birmingham.

Directions for Kidderminster:- (1) This loco is stabled at Kidderminster Station but it moves to Stourbridge at weekends. Kidderminster is about 17 miles South West of Birmingham on A456.

Directions for Wolverhampton Stabling points:- (Wolverhampton High Level & Low Level stations (3) Locos are found at both ends of the High Level Station, low level station can also be seen. Wolverhampton Steel Terminal (1) This loco can only be seen by rail. Wolverhampton Oil Terminal (1) This loco can also only be seen by rail. Old Bury Shunt Frame (1) This also can only be seen by rail when travelling from Wolverhampton to Birmingham. Oxley Carriage Siddings (2) Go straight ahead out of Wolverhampton High Level Station, into Litchfield Street, turn right onto Stafford Street, continuing into Stafford Road, about 2 miles up the road, turn first left after the canal bridge into Jones Road, there is a gate on the right hand side by the railway viaduct.

Directions for Wellington :- (1) The loco is stabled at the station, and Wellington is about 25 miles North West of Birmingham, going via A41, A464, A5 and A442.

Directions for Walsall:- (1) Works Monday to Friday at the South end of Walsall station, returning to Bescot at Weekends.

Directions for Wednesbury:- (1) Seen by rail only, works the yard near Wednesbury station, which is closed.

BU BURTON

Stabling Points are Coalville, Waggon Works Yard.

Directions to Burton Depot:- Turn left outside Burton Station along Borough Road, turn left into Wellington Street, and left into Shobnall Road, a path leads from the right hand side of this road just before the railway bridge.

Directions for Coalville:- (1) Coalville is approximately 12 miles North West of Leicester on the A50, going through Coalville on this road, loco are stabled on the right of the main road, just after the railway level crossing, coming from the direction of Leicester.

Directions for the Waggon Works Yard:- (1) This loco works Monday to Friday only the yards are just to the North of the Station at Burton.

BW BARROW

The stabling points are Barrow Docks, Lancaster, and Morecambe and Heysham.

Directions for Barrow Depot:- Cross the station yard, turning left across Abbey Road into Rawlinson Street, at the end turn right into Salthouse Road cross this road, turning left at the corner, there is a gateway on the left hand side, this road leads down to the depot.

Directions to Barrow Docks:- (2) Exact workings not known. Locos return to depot at night and at weekends.

Directions to Lancaster:- (1) Locos stabled at Lancaster Station.

Directions for Morecambe and Heysham:- (1) This loco works between both points but is mostly stabled at Morecambe Station.

BY BLETCHLEY

The stabling points are Bletchley Station, Wolverton Works, Northampton, Bedford, Rugby, Luton.

Directions for Bletchley Depot:- Turn left outside the station into the yard and go down the steps into Buckingham Road, turning left and continuing along Bletchley Road, turn left into Cambridge Street, and left again into North Street, turn right into Tavistock street, and left into Denby Way. Turn left at the end along the Factory Estate Road, turning left into First Avenue a drive leads to the depot from the left hand side of this road at the top. The Factory Road is adjacent to the A5, to the North of Bletchley.

Bletchley Station:- Locos are stabled on the N.C.L. Loading Depot.

Directions to Wolverton Works:- (3) These locos are not usually visible. Wolverton Works entrance is on the A422 between Newport Pagnall and Stony, Stratford.

Directions for Northampton:- (4) Two are stabled in the yards to the North of the station. The other two are stabled South of the Station in the P.W. Yard.

Directions for Bedford:- (1) Stabled either at Bedford Station or the N.C.L. Depot which is adjacent to the station.

Directions for Rugby:- (2) One stabled at either end of Rugby station.

Directions for Luton:- (1) The loco is stabled at Luton Station.

BZ ST BLAZEY

The stabling points are St. Austell, Bodmin Road Station, Par Harbour,

Directions for St. Blazey Depot:- Turn right outside Par Station and go along the cinder path running parallel to the railway, at the end turn right under the railway and go over the level crossing, bear right along the main road (A382) depot entrance is on the right hand side.

Directions for St. Austell:- (1) This loco works the St. Austell car train terminal at the station.

Directions for Bodmin Rd. Station:- (1) Bodmin Rd. Station is on the main A38 about 4 miles West of Bodmin.

Directions for Par Harbour:- (1) The lines to the harbour are where you cross over the level crossing for St. Blazey, the loco returns to the main depot every night.

CA CAMBRIDGE

The Stabling Points are Cambridge Station, Chesterton Junction, Bury St. Edmunds, and Ely.

Directions to Cambridge Depot:- Cross the Station yard into Station Road, turn first right into Tennison Road, turning right into Devonshire Road, and right again at the end into Mill Road. Crossing the railway, turn left into Cavendish Road, turn right Wetenhall Road, and left at the end into Sedgewick Street, continuing into Cromwell Road. Turn left into Coldhams Lane and fork right along the low level road, by the pub. The depot entrance is at the end of this road, turning left under the road bridge.

Cambridge Station:- (3) Loco found in the yards adjacent to the station.

Directions for Chesterton Junction:- (2) From Cambridge town centre, take the A10 for Ely. Just before the railway crossing, turn right at the roundabout, turn 4th left, and first left again off this street, this leads on to a private road. Where this road crosses the railway at the level crossing, there is a path on the left hand side, leading to the P.W. Depot.

Directions to Bury St. Edmunds:- (1) The loco is stabled at the station, the town is 28 miles east of Cambridge, on the A45.

Directions for Ely:- (1) This loco is also found at the station, Ely is 16 miles north of Cambridge on the A10.

CD CREWE DIESEL

The stabling points are, Crewe Station, North & South Carriage Sidings, South Marshalling Yards, Gresty Lane, Crewe Works, Shrewsbury, Cockshute, Stoke Station, Etruria, Stafford.

Directions to Crewe Diesel Depot:- Turn left outside of Crewe Station, turning first left again, down the private road that leads to the depot.

Crewe Station & North & South Carriage Sidings:- (3) These shunters are working in and out of the station all the time.

Directions for the South Marshalling Yards:- (1) A path leads from the main depot, over the Shrewsbury line, to the Marshalling Yards.

Directions for Gresty Lane:- (1) Turn left out of Crewe Station, turning left at the traffic lights (Gresty Lane). A path leads from the right hand side of this road near the 'Mornflake Oats' factory.

Directions for Crewe Works:- (4) Turn left out of Crewe Station, turning right at the traffic lights down Mill Street, follow this road, until the first set of lights turning right on to Market Street, turning left up Victoria Street, and where the road bears right carry straight on into Richard Moon Street. The entrance to the works is at the end of this street on the left.

Directions for Shrewsbury:- (3) These locos work in and out of Shrewsbury Station one may be found at Queens Road coal depot, to the North of the town on the A528. One also works down to Hookagate P.W. Depot, south of the town.

Directions for Cockshute:- (3) Turn left outside Stoke on Trent station into Station road, turning left at the end into Stoke Road, fork right into Shelton Old Road, turning right into North Street, turn right again into Shelton New Road, the depot entrance is on the right hand side, just before the railway bridge. If travelling by road to this depot, the depot is right at the end of the A500.

Stoke Station:- (1) The loco is stabled at Stoke Station.

CD CREWE (Continued)

Directions for Etruria:- (1) Etruria is North of S.O.T. on the A53. Loco works the yards to the North of Etruria Station.

Directions for Stafford:- (1) Stafford is on the A34 approx 10 miles South of S.O.T. The loco is stabled at Stafford Station.

CE: CREWE ELECTRIC

Locos are stabled as far apart as Euston Station, Lime Street Station, and Glasgow, in fact at most major stations on the west coast electric main line.

Directions for CREWE ELECTRIC DEPOT:- (1) Turn left outside the station, turning right at the traffic lights into Mill Street, follow the road round, and cross into W:staston Road, the depot entrance is on the right hand side. The loco can not usually, be seen from this road, however there are guided tours round the works, and the guide will take you to see the locos from a footbridge within the works itself, which overlooks the depot.

CF CARDIFF

The stabling points are Cardiff General Station/Cardiff N.C.L. Depot, Carriage Sidings, East Docks, Pengham, Aberdare, Barry, Llantrisant, Radyr,

Directions for Cardiff:- Turn left outside General Station down Central Square, turning left at the bottom into Wood Street, continuing over the river into Tudor Street, and then Ninian Park Road, turn left into DeCroche Place. A foot-bridge leads to the depot from the end of this Cul-de-Sac.

Cardiff General Station:- (2) These locos work in and out of the station and they also work the N.C.L. Depot.

Directions for the Carriage Sidings:- (1) They are on the top level of the depot, where the DMU's are.

Directions for the East Docks (6) Follow the signs for the docks, there is a road which runs right around the docks. All the locos can be seen from this road.

Directions for Pengham:- (3) From General Station, turn right into Wood St., turning left into High St., turn right at the top into Castle Queen St.,/Newport Road bear right into Fou Elms Road, turning right into Clifton St., and left into Tin St., turn right into Splott St., bearing right into Moorland Rd., a flight of steps on left leads to where locos can be seen.

Directions to Aberdare:- (1) Aberdare is about 16 miles North West of Cardiff, via the A470 and A4059, loco is stabled at Aberdare Station.

Directions for Barry:- (3) Locos are stabled in a shed next to Barry Station, these locos work out on Barry Docks.

Directions for Llantrisant:- (1) Llantrisant is approx 10 miles North West of Cardiff, via A4119. The loco is stabled at the station.

Directions for Radyr:- (5) Turn left out of Radyr Station, a private road leads down to the marshalling yards. Travelling by road, Radyr is about 5 miles North West of Cardiff via A4119, and the B4262.

CH CHESTER

The stabling points are Chester Station, N.C.L. Depot, Shotton, Croes Newydd, (Wrexham)

Directions for Chester:- Turn right outside the station, and go up a flight of steps turn right at the top, cross over the road, the entrance to the goods depot and main depot is on the left just after the road crosses the railway.

Chester Station:- (1)/N.C.L. Depot:- (1) The N.C.L. Depot is to be found adjacent to the depot.

Directions for Shotton:- (1) Shotton is about 6 miles West of Chester, via A458, loco works at British Steel Corporation Works.

Directions for Croes Newydd:- (?) Turn left outside Wrexham General Station, into Regent Street, and right into Bradley Road, turn right into Watery Road, Locomotives are stabled where the old steam depot used to be, on the left hand side of this Road, just past the level crossing.

CR COLCHESTER

The stabling points are Ipswich (Various), Harwich (Parkeston Quay).

Directions for Colchester Depot:- A crossing leads from the end of Number 3 platform at Colchester Station, to the depot.

Directions for Ipswich:- Station (2), Yards (2), The Docks (1), The Old Shed (1), Ipswich Yards are about $\frac{1}{2}$ mile North of Ipswich Station, on A1071, Hadley Road. Locomotives work various points in and around the docks, but return to Ipswich Station, where they are stabled at weekends. The Old Shed is South of Ipswich on the A137, approximately 1 mile.

Directions for Harwich (Parkeston Quay):- (3) Harwich is at the end of the A604 17 miles East of Colchester. From the main road (A604) locomotives are found working between Parkeston Quay Station, and Parkeston Station, where there is a big sorting yard.

CW CRICKLEWOOD

The stabling points are Cambridge Road, Marylebone Station, Brent Yard.

Directions for Cricklewood Depot:- Turn left outside Cricklewood Station into Cricklewood Lane, turning first left into Claremont Road, turn left again into Brent Terrace, the depot entrance is on the left between houses number 49 & 50.

Directions for Brent Yard:- (2) This is the yard at the opposite end of the depot to where you enter, where the carriage sidings, and the DMU's are.

Directions for Marylebone Station:- (1) The loco is stabled in the bay platform between the station and the DMU Depot.

Directions for Cambridge Road:- (1) This loco doubles as Station Pilot at St. Pancras Station. The Stabling Point can be seen from York Way, which is the road that runs by the side of King's Cross Station.

DE DUNDEE

The stabling points are Perth and Montrose.

Directions for Dundee Depot:- Turn left outside Dundee Tay Bridge Station into South Union Street, turning left again into Yeaman Shore. Turn left into Nethergate and fork left into Roseangle, the depot entrance is on the left.

Directions for Perth:- (3) Locomotives are stabled at Perth Station, and also in the yard at the side of the station, which can be seen after leaving Perth Station by Kings Place, turning left under the station, up the hill and turn right on to the railway over bridge.

Directions for Montrose:- (1) Montrose is about 30 miles North East of Dundee via the A92. Locomotive is stabled in a yard between Montrose Station and the river. The loco can be seen from the station.

DN DARLINGTON

The Stabling points are the Station, Shildon Waggon Works, Dinsdale P.W. Depot, and Etherly Tip.

Directions for Darlington Depot:- Leave Darlington Station turning right at the bottom of the approach road going under the bridge into Parkgate. Fork left into Yarm Road, turning left into Green Street, go through the gate at the end, and cross the footbridge to the depot.

Darlington Station:- (1) There is always one stabled here, the Station Pilot.

Directions for Shildon Waggon Works:- (3) Shildon is about 9 miles North West of Darlington on A68/6072. The Waggon Works are in the town Centre, right next to Shildon Station.

Directions for Dinsdale P. W. Depot:- (1) This loco works the P. W. Dp. when required, Dinsdale is on the A67 which is about 5 miles East of Darlington.

Directions for Etherly Tip:- (1) The locos are stabled at Etherly station which is now closed. Etherly is approx. 11 miles North West of Darlington via A68.

DR DONCASTER

The stabling points are the Station and Doncaster Works.

Directions for Doncaster Depot:- Cross the station yard turning diagonally into Station Road, continuing into West Street, turning right into St. Sepulchers Gate West. Cross the main road (Cleveland Street) carrying on down this road, turning left at the roundabout into Green Dyke Lane, turn right into Carr Lane. A private road leads from the right hand side of Carr Lane just past the Cemetery entrance.

Doncaster Station:- (2) One loco to be found at either end of the station.

Directions to Doncaster Works:- (3) Directions as for the main depot, but instead of crossing Cleveland Street, keep to the right hand side. There is a road leading up over the railway at the end of the station buildings. The Works entrance is on the right opposite the pub.

DT DUNFERMLINE TOWNHILL

The stabling points are Thornton Junction, Kirkaldy, Methil and Markinch.

Directions for Townhill Depot:- Go out of Dunfermline on the A907 for Cross Gates. This road is called Halbeath Road. Turn first left after the Fod Arms Hotel, the depot entrance is on the left hand side of this road, just before the level crossing. If travelling by road, the best way to approach this depot is to come off the M90 at junction 3 and go down the hill turning right into the road before the hotel.

Directions for Thornton Junction:- (2) There is no easy way to Thornton Junction stabling point. From Thornton Village, which is on A92, about 3 miles North of Kirkaldy, leave the station turn left at main road, and turn 2nd right, continue for approx 2 miles. The entrance to the yards is on the left hand side. By car go North on A910 turning right on B922 and take minor rd. for Thornton on right

Directions for Kirkaldy:- (2) Kirkaldy is about 14 miles East of Dunfermline on A907/A92 locos stabled at Kirkaldy Station which is on the main road.

Directions for Methil:- (2) Locos can be seen from A955 in Methil.

Directions for Markinch:- (1) Markinch is approx 6 miles North of Kirkaldy via A92 A911. The loco is stabled at Markinch Station.

DE DERBY

The stabling points are The Station, Works, Etches Park and Research Centre.

DY DERBY (Continued)

Most of the locos can be seen from Derby Station. Directions to the Research Centre and Etches Park:- Go straight out of Derby Station into Midland Road, turning left into London Road, the Research Centre is on the left just after the railway bridge. Carry on down the main road, turning left into Dead-Mans Lane, the depot entrance is just after the railway bridge on the left.

Directions for Derby Works:- (3) Turn right out of Derby Station, the Works entrance is on the right about 200 yards down on the right.

ED EASTFIELD

The stabling points are Polmadie, Corkerhill, Whifflet Junction/Coatbridge, Johnstone, Dumbarton, Central Station N.C.L., Cadder Yard, Larkfield Carriage Sidings, Cowlairs Carriage Sidings, Greenock/Gourock, High Street Goods Depot, Paisley, General Terminus Quay, Yoker, St. Rollox Works.

Directions to Eastfield Depot:- Turn right out of Queen Street Station, into George Street, continue along to High Street, either turn right for High Street Station, where (1) shunter is stabled, or turn left up High Street, continuing into Castle Street and Springburn Road, St. Rollox Works is on the right of this road, about 1 mile further on. Continue on this road turning left into Hawthorn Street, Cowlairs C.S. can be seen between the houses on the left. Turn right just before the railway bridge into a private road, the depot entrance is on the left hand side of this road.

Directions for Polmadie:- (8) Follow directions to High Street, turning right down High Street, continuing into Crown Street, turn left into Caledonia Road, turn right into Polmadie Road, the depot entrance being on the left hand side just before the railway bridge.

Directions for Corkerhill:- (2) Turn left outside Corkerhill Station, about 200 yards further on this road (Corkerhill Place) a broad path leads from the left hand side adjacent to the railway to the depot.

Directions for Whifflet Junction/Coatbridge:- (4) Coatbridge is approx 6 miles East of Glasgow, via A8 and A725. At this junction, turn North, about a mile up the road where the railway crosses under the main road locos are stabled either side and sometimes underneath the road bridge.

Directions for Johnstone:- (1) Johnstone is approx 11 miles West of Glasgow, on A737. The loc works Johnstone F.L.T.

Directions for Dumbarton:- (1) Dumbarton is approx 15 miles North West of Glasgow via A82. The loco is stabled at Dumbarton Central Station.

Glasgow Central Station N.C.L.:- (1) This loco serves both the N.C.L. Depot and Central Station.

Directions for Cadder Yard:- (2) This yard is actually in a village called Lenzie. Leave Glasgow on the A803 turning onto the B812, and then onto the B757. The road crosses the line at Lenzie Station.

Directions for Larkfield Carriage Sidings:- Can only be seen by rail travelling from Glasgow to Edinburgh on the Push-Pull trains.

Directions for Greenock/Gourock:- (2) Situated approx 23 miles West of Glasgow on A8. Morton F.C. ground overlooks the yard at Greenock. Locos work between these two points, situated about 2 miles apart.

ED EASTFIELD (Continued)

Directions for Paisley:- (1) Paisley is approx 7 miles West of Glasgow on A737. This loco is the Car Train Pilot for Cryslers' Linwood Plant.

Directions for General Terminus Quay:- (2) These locos can only be seen by rail to the South West of Glasgow Central Station.

Directions for Yoker:- () Yoker is approx 5 miles to the North West of Glasgow on A814 Dumbarton Road. Locos stabled at Yoker Station.

EH EASTLEIGH

The stabling points are Eastleigh Station, Works, Southampton Docks, Northam, Basingstoke, Salisbury, Redbridge, Fratton.

Directions to Eastleigh Depot:- Turn left outside Eastleigh Station turning first left into Campbell Road, follow this road over the railway, the Works entrance is on the left, the depot entrance is slightly further on, on the right.

Eastleigh Station:- (1)

Directions for Southampton Docks:- (5) You are not allowed onto Southampton Docks. However, it is rumoured that these shunters are being transferred from the docks, whereby main line locos will take over their duties.

Directions for Northam:- (1) This is the name of the yard North of Southampton Terminus Station.

Directions for Basingstoke:- (2) One loco is stabled in the station, the other one works the yards to the south of the station.

Directions for Salisbury:- (1) This loco is stabled at Salisbury Station.

Directions for Redbridge:- (1) Redbridge is $\frac{1}{2}$ mile West of Southampton Station on the Bournemouth line. The loco works in the P. W. Yard.

Directions for Fratton:- (2) Both stabled either at Fratton Station, or the EMU Depot near to the Station.

EJ EBBW JUNCTION

The stabling points are Newport Station, Pill (The Docks), Severn Tunnel Junc., Aberbeeg, East Usk Junction.

Directions for Ebbw Junction:- Turn right outside the yard, after leaving Newport High Street Station, into High Street, turn right into Kingsway, continuing into Cardiff Road, after about a mile, just after the railway bridge, there is a drive on the left hand side. This leads down to the depot. Cardiff Road is the main A48.

Newport High Street Station:- (1) This loco doubles up workings at Station and N.C.L. Depot.

Directions for Pill (The Docks):- (4) Follow directions for Ebbw Junc., but turn off Cardiff Road, into Mendalgief Road, which is on the left. The dock entrance is at the end of this road, at the junction with Watch House Parade. The locos are usually stabled all together about 200 yards up on the right.

Directions for Severn Tunnel Junction:- (5) Go straight out of the station and turn left next to the B.R.S.A. Club, this drive leads round to the depot. By road take the A48 out of Newport, for Chepstow, turning on to the B4245 S.T.J. is sign - posted from the village of Rogiet.

Directions for Aberbeeg:- (1) Aberbeeg is approx 12 miles North West of Newport via A467. Locos can be seen from the main road, in the valley, the shunter works up to Spencers Steel Works in Ebbw Vale.

EJ EBBW JUNCTION (Continued)

Directions for East Usk Junction:- (2) These locos work when required to Uskmouth power Station, which is about $\frac{1}{2}$ mile South of the town.

FH FRODINGHAM

The stabling points are Barnetby.

Directions for Frodingham Depot:- Turn right outside Scunthorpe Station into Stn. Road, turn left into Manley Street, bear right at the end into Carlton Street, past St. Johns' church and just after the church, Daws Lane is on the left. The depot entrance, is about 200 yards down this lane on the right.

Directions for Barnetby:- (1) The loco is stabled at Barnetby Station, which is off the A18 about 9 miles East of Scunthorpe.

FP FINSBURY PARK

The stabling points are Kings Cross Station, York Way N.C.L., Wood Green C.S., Holloway C.S., Hornsea C.S., Welwyn Garden City,

Directions to Finsbury Park Depot:- Turn right outside Finsbury Park Station, and right again into Seven Sisters Road, turn left into Isledon Road, and left into Tollington Road, the shed entrance is on the left hand side.

Kings Cross Station:- (Shunters not usually found here main line locos seem to do the Shunting.)

Directions for York Way N.C.L.:- (2) Turn left outside Kings Cross Station into York Way, the locos can be seen by looking over the wall, about half a mile up the road.

Wood Green Carriage Sidings:- (2) These locos can be seen from Wood Green Station.

Holloway C.S. :- (1) The Carriage Sidings are between the main depot and Kings Cross Station, and can only be seen by rail.

Hornsea C.S. :- (2) These are on the sight of the old Horsea Depot, can be seen from Horsea Station.

Directions for Welwyn Garden City:- (1) Works the N.C.L. Depot next to the Station.

FW FORT WILLIAM

Directions to the Depot:- (1) Turn left out of Fort William Station on to the Main A82, the shunter has its own shed in the N.C.L./Goods Yard, whose entrance is about a mile up this road.

GD GATESHEAD

The stabling points are Newcastle Central Station, Sunderland Station, Sunderland Shed, Monkswearmouth, Consett, Heaton, Blyth Cambois, Tyne Yard, Lowfell P.W. Depot, Tyne/Wear N.C.L., Jarrow Docks, Berwick-on-Tweed, South Gosforth.

Directions to Gateshead Depot:- Turn right outside Newcastle Central Station into Neville Street, turning right into Westgate Road, turn right at the traffic lights and cross the river over the low level bridge. Turn right at the end of the bridge into Hudson Street, and right again under the railway bridge. This road leads through the back of the old Gateshead works to the depot.

Newcastle Central Station:- (4) Locos are found two at either end of the station.

Sunderland Station:- (1) Loco is stabled in the station yard.

Directions for Sunderland Shed:- (4) Turn right outside Sunderland Stn., into High St. West, then High Street East, fork right into Warren St., and turn right into Barrack Street, then turn left into Prospect Row, the entrance is on the right.

GD GATESHEAD (Continued)

Directions for Consett:- (3) Consett is approx. 12 miles South West of Gateshead, these locos work in Consett Steel Works,

Directions for Heaton:- (4) Turn left outside Heaton Station, along North View, opposite the end of this road, there is a gate, which leads down to the shed. The road at the end is Chillingham Road.

Directions for Blyth Cambois:- (2) Blyth Cambois is about 12 miles North of Gateshead via the A189 and B1330 turn right off this road, going through the village of East Sleekburn, following signs for Cambois, the depot is along this road.

Directions for Tyne Yard:- (4) This depot is about 3 miles South of Gateshead at Lames'ov, down the A1. Leave the A1 and go underneath it following the signs for Team Valley, turning left through the multy-storey flats. About $\frac{1}{2}$ mile down on the left hand side a private road leads to the depot.

Directions for Lowfell P.W. Depot:- (1) This loco works when required using one of the shunters off Tyne Yard.

Directions for Jarrow Docks:- (1) This loco works in the docks just to the North West of Jarrow Station.

Directions for Berwick-on-Tweed:- (1) Berwick-on-Tweed is approx 50 miles North of Gateshead on the A1. The loco is either stabled at the station, or is working in the N.C.L. Depot, both places can be seen from the main Road.

Directions for South Gosforth:- (1) Turn right from South Gosforth Station approach into Station Road, fork left along a footpath, opposite the end of Sandringham Rd. continue into Ridgewood Gardens, past the flats, turning left into Hunters Road, at the end of this road, cross over the railway footbridge, turning left at the end of the footpath. Bear left along Hollywood Avenue, turning left into Cheswick Drive, turn left at the junction, the depot entrance is on the right hand side.

GL GLOUCESTER

The stabling point is Gloucester Station.

Directions for Gloucester Depot:- Turn right outside Gloucester Station turning r right again under the subway, turn right into Great Western Road, and right again into Haughton Road. The depot entrance is on the right hand side before the level crossing.

Gloucester Station:- (1) This loco is the station pilot, all shunters are on depot at weekends.

GM GRANGEMOUTH

The stabling pionts are Sterling and Grangemouth Docks.

Directions for Grangemouth Depot:- Take the Grangemouth Road out of Falkirk, turning right into Laurieston Road a good mile out of Falkirk. The entrance to the depot is on the left hand side of this road, just after the railway bridge.

Directions for Grangemouth Docks:- (2) Various workings from the depot to the docks and the B.P. Oil Refinery. Locos return to the depot for the weekends.

Directions for Sterling:- (1) Locos are stabled in the station yard.

HA HAYMARKET

The stabling points are Millerhill Yard, Waverly Station, Craigentinny C.S. South Leith, Carstairs, Bathgate.

HA HAYMARKET (Continued)

Directions for Haymarket Depot:- Turn left outside Haymarket Station into Haymarket Terrace, continuing along West Coats, turn sharp left into Russel Road, a private road leads to the depot from the right hand side of this road. From Waverly Station, turn left into Princess Street, continuing into Shandwick Place, turn right into Haymarket Terrace.

Waverly Station:- (3) Loco work at either end of the station.

Directions for Millerhill Yard:- (6) Take the A7 and A68 out of Edinburgh for Dalkeith, turn right onto the A6106, turning right onto the B6415 for Musselburgh, the entrance to the yards is about $\frac{1}{2}$ mile down this road.

Directions for Craigentinny C.S.:- (1)/South Leith:- (1) From Edinburgh, take the A900 into Leith, then the A199 the Coast Road, Craigentinny C.S. is on the right, for the loco stabled at South Leith, it is on the left.

Directions for Carstairs:- () The locos are stabled in the old steam depot which is next to Carstairs Junction Station, which is approx 1 mile from Carstairs village on the A70.

Directions for Bathgate:- () Bathgate is approx 14 miles West of Edinburgh via A8 and A89 or alternatively M8 coming off at Junction 4. The locos are stabled on the sight of the old Bathgate Depot, on A89 just out of the town centre.

HD HOLYHEAD (5)

The locos are stabled in and around Holyhead Station, the two class 01's have their own shed on the breakwater

HG HITHER GREEN

The stabling points are Rochester, Gillingham, Hoo Junction, Bricklayers Arms the Continental F.L.T.

Directions for Hither Green Depot:- A path leads from the end of Number 4 platform of Hither Green Station to the depot.

Directions for Rochester :- (1) Loco is stabled in the goods yard adjacent to Rochester Station.

Directions for Gillingham:- (?) Loco are stabled between Gillingham Station and the EMU Depot.

Directions for Hoo Junction:- (2) Take the A226 out of Gravesend, turning left through the village of Chalk along a minor road, after about $1\frac{1}{2}$ miles, turn left past Queens Farm; this road probably signposted Shorne Marshes. The junction is on the right hand side where this road crosses the railway level crossing.

Directions for Bricklayers Arms:- () Down the A2 out of London (Old Kent Road) the goods depot is clearly signposted on the left hand side.

Directions for Continental Freightliner Terminal:- () Turn right outside Hither Green depot road entrance, go down to the main road, turn right go under the Railway bridge, and turn immediately left this road leads up to the F.L.T.

HI HITCHIN

Directions for Hitchin Depot:- (3) Cross the yard outside the station and turn right turning left almost immediately along a short road, turning left into Night-ingle Road, the depot entrance being on the right hand side a short distance down.

HM HEALEY MILLS

The stabling points are Wakefield Kirkgate Station, Wakefield Waggon Works, Huddersfield, Crofton P.W. Depot,

Directions to Healey Mills Depot:- The depot is approx 4 miles West of Wakefield at Horbury, on the A642, turn off the main road on to Storrs Hill Road, a drive leads to the depot from the left hand side just after the railway bridge.

Wakefield Kirkgate Station:- (1) Class 03.

Directions for Wakefield Waggon Works:- (1) These works are on the sight of the old Wakefield steam depot, from Kirkgate Station turn left into Kirgate, and fork left into Doncaster Road, the works can be seen from this road.

Directions for Crofton P.W. Depot:- () Crofton is approx 4 miles South East of Wakefield via A638, and B6378. The depot is signposted.

Huddersfield Station:- (1) The Station Pilot.

HN HAMILTON

The stabling points are Motherwell, Ravenscraig Steel Works, Moss End Yard.

Directions for Hamilton:- The shed is adjacent to Hamilton West Station.

Directions for Motherwell:- (5) Turn left outside Motherwell Station along Muir Street, after crossing the railway, a road leads through some rough ground. The main road (Muir Road) is the A721.

Directions for Ravenscraig Steel Works:- (1) This loco is not usually seen until returning either to Motherwell or the parent depot for Servicing.

Directions for Moss End Yard:- (4) Turn off the A8 coming from Glasgow, onto A725 going south, turn left onto A775, approx 1 mile down there is a railway overbridge, locos can be seen on either side.

HO HOLBECK

The stabling points are City Station, Stourton/Hunslet F.L.T. and Valley Road N.C.L.

Directions to Holbeck Depot:- From Leeds City Station turn right into Neville Street which is A653 for Dewsbury. Turn right into Water Lane, and at the end into Bridge Street. Turn left into Nineveh at the top, the depot entrance is on the left hand side just before the railway bridge.

Leeds City Station:- (1) The loco is the Station Pilot.

Stourton/Hunslet F.L.T.:- (2) These locos work between the two F.L.T.'s Hunslet is South of Leeds on A653, Stourton is South East of Leeds on B6481.

Directions for Valley Road N.C.L. :- (1) This N.C.L. is at Bradford, the loco is either stabled on the N.C.L. Depot, or at Forster Square Station.

HS HAMMERTON STREET (Bradford)

The stabling points are Exchange Station, and Halifax.

Directions for Hammerton Street Depot:- Leave Bradford Exchange Station approach turning into Drake Street, turning left into Bridge Street, continue into Wakefield Road, turning left at the roundabout into Bowling Back Lane. The depot entrance is on the left hand side.

Exchange Station:- (1) The loco is the Station Pilot.

Directions for Halifax:- () Halifax is about 8 miles South West of Bradford, loco works the goods depot near the Station.

IM IMMINGHAM

The stabling points are The Docks, Grimsby (Station & Docks),

Directions to Immingham Depot:- From Grimsby (the nearest large town), go North on the A1136, through Immingham Village, following the signs for the docks, on A160. The depot entrance is on the right hand side of this road. On the opposite side of this entrance, near the offices, there is a road leading through the dockland, to where the other locos are stabled.

Directions for Grimsby Station:- (1) The Docks (1) The loco is stabled at Grimsby town station. The other shunter is right on the edge of the docks, it is advisable to ask the foreman at Immingham depot exactly where the locos are, as locations do vary.

IS INVERNESS

The stabling points are for locos only, all shunters work in and around Inverness Station and Yards. Elgin on A96 22 miles from Inverness, Wick on A9 about 125 miles North of Inverness, Thurso on A882 approx 21 miles North West of Wick, Kyle of Lochalsh on A87 70 miles West of Inverness. The locos at all these points are stabled at the station.

Directions to Inverness Depot:- A foot bridge leads from the end of Number 5 platform to the depot.

KD KINGMOOR

also) Workington & Dumfries

The stabling points are Citadel Station, Carlisle N.C.L., Carlisle New Yards.

Directions to Kingmoor Depot:- Leave Carlisle Station by the main entrance going straight ahead into Court Square, turn left along English Street, continuing into Scotch Street, and Rickergate, cross Eden Bridge, continuing up Stanwix Bank, turning left at the top along Etterby Street, continuing into Etterby Scour, turn left at the top of the hill into Etterby Road, a drive to the depot is on the right hand side just after the railway bridge.

Directions for Carlisle New Yards:- (6) From Kingmoor depot, go back down Etterby Road, turning left into Etterby Scour, continue along this road for about a mile, There is no path leading down to the yards, however all the locos can be seen from this road.

Citadel Station:- (2) The locos work one either end of the station.

Directions for Carlisle N.C.L. Depot:- (1) This loco can be seen from the South end of the station.

Directions for Workington:- (4) Workington is on A596 33 miles South West of Carlisle. The locos are stabled in the old steam depot, which is adjacent to Workington Station.

Directions for Dumfries:- (1) Dumfries is 33 miles from Carlisle in a North Westerly direction on the A74/A75, the locos are stabled in the goods yard/coal yard, South of Dumfries Station, can be seen from the main road.

KY KNOTTINGLEY

The stabling points are Ferry Bridge Power Station,

Directions to Knottingley Depot:- Go straight out of Knottingley Station (Knottingley is approx 16 miles South East of Leeds via A63/A1) turning right at the top of the approach road into Hill Top, turn right into Headlands Lane, and left into Spawd Bone Lane, the depot entrance being on the left hand side, just after the railway bridge. Main line locos work 'Merrygoround' trains to Ferry Bridge Power Stn.

LA LAIRA

The stabling points are Plymouth Station.

Directions for Laira Depot:- Turn right outside Plymouth Station, along the approach Road turning left into St. Georges Street, turn left into North Road, and left again into Tavistock Road, fork right into Alexandra Rd., continuing into Laira old Road. After quite some distance, turn right onto North Esplanade. A footbridge leads from the right hand side of this road, to the depot. Although locos can be seen from this road, whilst walking down.

Plymouth Station:- (1) The loco is the Station Pilot.

LE LANDORE

The stabling points are Swansea High Street Station & Carriage Sidings, Swansea East Dock, Panyffynon, Llanelli, Carmarthen, Fishguard, Bury Port.

Directions for Landore Depot:- Turn right outside Swansea High Street Station, into High Street, fork right into Prince of Wales Road, continuing along Neath road, a drive leads to the depot, between two railway bridges.

Swansea High Street Station & Carriage Sidings:- (3) Can all be seen from the Station.

Directions for Swansea East Dock:- (6) Turn left outside High Street Station into High Street, continue into Castle Street, then Wind Street, turning left after the railway bridge into Quar Parade, cross the river and continue along the main Port Talbot Road, (A483) the locos can be seen about $\frac{1}{2}$ mile further down on right hand side.

Directions for Pantyffynnon:- (1) Loco is stabled at the station. The nearest big town is Ammanford. From here take the A483 South to the village of Tycroes, turn right in the village onto a minor road which leads to Pantyffnnon.

Directions for Llanelli:- (4) These locos work in Llanelli Docks, but are stabled in a yard near to Llanelli Station.

Directions for Carmarthen:- (2) Locos are stabled at Carmarthen Station. Carmarthen is approx 20 miles North West of Swansea via A48.

Directions for Fishguard:- (1) Loco is stabled in the yard next to Fishguard Harbour Station.

Directions for Bury Port:- (1) Locos stabled in a yard near to Bury Port Station. Bury Port is about 15 miles North West of Swansea via A484.

LJ LLANDUDNO JUNCTION

The stabling point is Bangor.

This depot has only 1 shunter, which is either found at Llandudno Junction Station, or Bangor Station.

LN LINCOLN

The stabling points are Grantham, Sleaford, Boston, Spalding, and Newark.

Directions for Lincoln Depot:- Turn right outside Lincoln St. Marks Station, turning left after the approach Road, into High Street, turn right after the railway crossing into St. Marys Street, passing Central Station, continuing into Norman Place, pass under Canwick Road, cross over the railway footbridge, following the path at the bottom to the level crossing. The depot entrance is just past the level crossing on the left hand side.

LN LINCOLN (Continued)

Directions for Grantham:- (1) Loco stabled in station yard. Grantham is 25 miles South of Lincoln on A607.

Directions for Sleaford:- (1) Loco stabled on Sleaford Station which is 17 miles South East of Lincoln on A15.

Directions for Boston:- (2) A Class 03 is stabled on Boston Station, an 08 is stabled near the dock. Boston is 13 miles East of Sleaford, via A17 and A1121.

Directions for Spalding :- (1) Loco is stabled at Spalding Station. Spalding is 16 miles South of Boston on A16.

Directions for Newark:- (2) Loco is stabled at Newark Station. Newark is 16 miles South West of Lincoln on A46.

LO LONGSIGHT DIESEL

The stabling points are Buxton, Ashburys, Mayfield Parcels Depot, Stockport, Trafford Park F.L.T., Ardwick Junction, Guide Bridge, also LG LONGSIGHT ELECTRIC

Directions for Longsight Depots:- Turn left outside Manchester Victoria Station, into Todd Street, turn right down corporation Street, turning left into Cannon Street, continue along this road turning right at the top into Ducis Street, turn left after PICADILLY STATION approach down London Road. Continuing into Downing Street and Ardwick Green South, fork right down Stockport Road, after about 1 mile turn left into Kirkmanshulme Lane. Turn left immediately after passing under the railway bridge. A path leads up to the Electric Depot about 50 yards further on is the Diesel Depot.

Directions for Buxton:- (1) This loco is stabled at the old steam depot, just to the North of Buxton Station.

Directions for Ashburys:- (2) Locos are stabled on the N.C.L. Depot next to Ashburys for Belle Vue Station. From the main depot return to Kirkmanshulme Lane turning left at the top into Hyde Road, fork right into Belle Vue Street, continuing into Gorton Lane. Ashburys Station is on this Road.

Directions for Mayfield Parcels Depot:- (1) Mayfield Parcels Depot is at the South end of Piccadilly Station.

Directions for Stockport:- (1) This loco works in the yards adjacent to Stockport Station.

Directions for Trafford Park F.L.T. :- (1) From Old Trafford Station turn left down Talbot Road, turning right down Warwick Road, continuing into Warwick Road North, turn left into Railway Road, a path leads over a footbridge over the railway to where the locos can be seen.

Directions for Ardwick Junction:- (1) Following the directions for Longsight depot fork left after Ardwick Green South, down Hyde Road, turning left into Devonshire Street North, and right into Blind Lane, Ardwick Station is on the right the locos can be seen in the yards behind the station.

Directions for Guide Bridge:- (2) Locos can be seen in the yards to the East of Guide Bridge Station.

LR LEICESTER

The stabling points are Station, Wellingborough, and Corby.

Directions for Leicester Depot:- Turn left outside Leicester Stn., into London Road, turning left into Conduit St., at end turning Diagonally right into Upper Conduit St turning left into Upper Kent St., and left into Beal St, depot entrance is on left.

Leicester Station (1) The loco is the Station Pilot.

Directions for Wellingborough:- (3) Wellingborough is 25 miles South of Leicester, via A6 and A509. Locos are stabled at the old steam depot, near to Wellingborough Station.

Directions for Corby:- (2) These locos work at Stewarts & Lloyds Steel Works, and the adjacent marshalling yards. Corby is 25 miles South East of Leicester, via A6 and A427.

MG MARGAM

The stabling points are Port Talbot Steel Works and Britton Ferry Steel Works.

Directions to Margam Depot:- From Port Talbot take the main Cardiff Road, A48, after about 3½ miles turn onto the B4283, after about another mile, a drive leads to the depot from the right hand side of this road.

Directions for Port Talbot Steel Works:- (2) These locos can be seen working the yards outside the steel works, from the main road, (A48).

Directions for Britton Ferry Steel Works:- (1) This loco can be seen working in the yard of the steel works near the junction of A48 and A474.

MR MARCH

The stabling points are March Station, Kings Lynn, Peterborough.

Directions for March Depot:- Turn left outside March Station cross over the level crossing and turn first left into Norwood Road, turning right at the end into Hundred Road, a drive leads to the depot from the right hand side of this road.

March Station:- (1) Loco is the Station Pilot.

Directions for Kings Lynn:- (4) The locos are stabled in the yard next to Kings Lynn Station.

Directions for Peterborough:- (6) Locos are stabled at Peterborough Station, and in the yard near to the old shed, which is off A15.

NA NEWTON ABBOT

The stabling points are Exeter & Meldon Quarry.

Directions for Newton Abbot Depot:- Turn left outside the station, into station Road continuing along Torquay Road, over the railway bridge, turning first left, and first left again. The depot entrance is a gateway in the wall on the left hand side.

Directions for Exeter:- (4) These locos are stabled in the yard right next Exeter St. Davids Station.

Directions for Meldon Quarry:- (1) Meldon Quarry is off A30 about 3 miles South West of Oakhampton.

NH NEWTON HEATH

The stabling points are Manchester Victoria Station, Bolton, Windsor Bridge, Oldham N.C.L. Depot, Castleton P.W. Depot, Miles Platting,

Directions to Newton Heath Depot:- Turn left outside Victoria Station, turning left again into Millgate, turn right at the end into Miller Street, continuing into Swan Street, turn left into Oldham Road, the loco stabled at Miles Platting can be seen about a mile up this Road. About a mile further on turn left into Dean Lane, the depot entrance is on the left hand side just after the railway bridge. Dean Lane Station is right opposite the depot entrance.

Manchester Victoria Station:- (1) Loco is stabled at the East end of the Station.

NH NEWTON HEATH CONTINUED

Directions for Bolton (2) These locos are either stabled under the road bridge, at the South Eastern end of Bolton Trinity Street Station, or at the N.C.L. Depot which is adjacent.

Direction for Windsor Bridge:- (1) Turn right outside Victoria Station go down the hill, turning left at the bottom and almost immediately right on to Chapel Street, continue along this road (A6) for about 2 miles, turn left into Albion Street, after crossing the railway near Salford University, the loco is stabled near the signal box which can be seen on the left.

Directions to Ordsal Lane:- As for Windsor Bridge, continuing down Albion Street, turning left into Liverpool Street, crossing into Middlewood Street, the loco can be seen on the right hand side. From here go underneath the railway down Hampson St., turning left into Water Street, and right into Quay Street, turn left down Deansgate and this brings you back to Victoria Station.

Directions for Oldham N.C.L. Depot:- (1) The N.C.L. Depot is adjacent to Oldham Station.

Directions for Castleton P.W. Depot:- (1) From Castleton Station, on the Rochdale line, cross the main road into Railway Brow, the loco works the rail welding depot and can be seen from the top of this road, A6045 is the number of the Main road.

NL NEVILLE HILL

The stabling points are the Carriage Siding.

Directions to Neville Hill Depot:- Turn right out of Leeds City Station approach, on to Boar Lane, continuing into Duncan Street, and then into New York Street, at the end turn right on to York Road (A64) after about a mile and $\frac{1}{4}$ turn right into Osmondthorpe Lane, the depot entrance is on the right just before the railway bridge.

Directions for the Carriage Sidings:- (2) The Carriage Sidings are adjacent to the depot.

NR NORWICH

The stabling points are Station, Yarmouth, Lowestoft, Wymondham, Stowmarket.

Directions to Norwich Depot:- Go up the slope from Norwich Thorpe Station into Lower Clarence Road, turning first right into Clarence Road, the shed entrance is on the right hand side just after the railway bridge.

Norwich Thorpe Station:- (1) The loco is the station pilot.

Directions for Yarmouth:- (2) Locos stabled at Great Yarmouth Station, can be seen from the A47 Yarmouth is 20 miles East of Norwich via A47.

Directions for Lowestoft:- (1) Loco is stabled at Lowestoft Station, Lowestoft is 10 miles South of Great Yarmouth via A12.

Directions for Wymondham:- (1) Loco is stabled in the scrap yards, just to the South of Wymondham Station. Wymondham is 10 miles South West of Norwich, via A11 the station is on B1135.

Directions for Stowmarket:- (1) Stowmarket is between Bury St Edmonds and Ipswich on A45. The loco is stabled in the yard just to the South of Stowmarket Station.

OC OLD OAK COMMON

The stabling points are Paddington Station, Southall, Slough.

OC OLD OAK COMMON (Continued)

Directions for Old Oak Common Depot:- Turn left outside Willesden Junction Station into Old Oak Lane, turn left into Old Oak Common Lane, and a drive leads down to the depot from the left hand side.

Paddington Station (1) The loco is the Station Pilot.

Directions for Southall:- (3) Turn right outside Southall Station, along South Road turning right into Park Avenue, there is a foot bridge on the right hand side, which crosses the railway. A flight of steps leads down to the depot from the middle of the bridge.

Directions for Slough:- (1) The loco is the Station Pilot.

OX OXFORD

The stabling point is Didcot.

Directions for Oxford:- Turn right outside the station into the approach road, turning right under the railway, and right into Cripsey Road, continuing into Abbey Road, turn left at the end along a path turning right over the canal foot bridge. Turn right along the tow path, the depot entrance is on the left.

Directions for Didcot:- (1) The loco is stabled at Didcot Station.

PZ PENZANCE

Directions for Penzance Depot:- Turn right outside Penzance Station, on to the main Road, A30, continue for about 1 mile, the depot entrance is on the right hand side.

RG READING

Directions for Reading Depot:- Turn right outside Reading General Station into Station Hill, continuing into Tudor Road, turn right into Caversham Road, turning left into Northfield Road, turn left into Swansea Road, and bear right into Cardiff road, turning left at the end into Cow Lane. The depot entrance is just past the railway bridge on the left.

RS REDDISH

The stabling points are Guide Bridge, Rotherwood, and Wath.

Directions for Reddish Depot:- Directions as for Longsight Depot, continue up Kirkmanshulme Lane, turning right at the top, into Hyde Road, turning right onto Knutsford Road, turning left after the park and first right down Levenshulme Road, turn left at the bottom into Hemsworth Road, and right into Weyland Road. The depot entrance is on the right at the bottom of the road. Alternatively from Reddish North Station, cross the main road, and go down Station Road, a path leads to the depot from the right hand side just after the railway bridge.

Directions for Guide Bridge:- (2) See under Longsight,

Directions for Rotherwood:- (-) From Tinsley Depot, return to the main road, turning right, turn right at the road junction, and follow this road, for about 1 mile. turning left down the road for Orgreave Colliery, the locos are stabled in the yard on the right just after the railway bridge.

Directions for Wath:- (-) See under WH Wath.

RY RYDE I.O.W.

The depot has one shunter which can usually be found at the station.

SB SHIREBROOK

The stabling point is Worksop.

Directions for Shirebrook Depot:- Go North out of Mansfield on A60, after approx 3 miles turn left on to the B6047. Shirebrook depot is on the left where the old Shirebrook Station was.

Directions for Worksop:- (6) Turn right outside Worksop Station, into the approach road, cross the main road A57, directly opposite is a wide path, take the left fork about 100 yards up, this leads round to the depot and yard.

SF STRATFORD

The stabling points are Temple Mills, Ripple Lane, Dagenham Docks, and various other dock workings, too numerous to mention. Ask running foreman for the location of particular locos.

Directions for Stratford Depot:- Turn left outside Stratford Station into William Street. A tunnel leads under the railway, to the depot from the left hand side of this street. Shunters also work on Stratford Loco Works, which is past the depot, on the road leading to the F.L.T. Continue on this road, turning right at the top on to the main road, The loco stabled at Temple Mills Yard:- (8) can be seen on the left hand side where the road crosses the railway.

Directions for Ripple Lane:- (3) Turn left outside Dagenham Dock Station into Chequers Lane, turning left at the end on to Ripple Road, after about a mile turn left into Renwick Road, a road leads down to the depot, from the middle of two railway bridges, on the.

Directions for Dagenham Docks:- (1) This loco works at Fords Motor Works.

Stratford has nearly 50 shunters so don't forget to ask the location of your locos.

SG SLADE GREEN

Slade Green is between Erith and Dartford or alternatively turn off the A2 on to the A206. The depot is just to the South of The Station; the workings of the locos (1 Class 03 & 1 Class 08) are not known.

SL STEWARTS LANE

Directions to the Depot:- Turn left out of Clapham Junction (Top Level) Station approach into Lavender Hill, continuing into Wandsworth Road, turn left into Portslade Road, the Depot Entrance is a gate in the wall at the bottom on the right.

SP SPRINGS BRANCH

The stabling points are North Western Station, Wallgate Goods Depot, Horwich Works, St. Helens, Warrington Arpley, Preston, Blackpool, Blackburn, and Kirkham.

Directions for Springs Branch:- Turn right outside Wigan North Western Station into Wallgate, turning right into King Street, continue into Darlington Street, and fork right into Sovereign Road, and right again into Warrington Road. After about a mile turn right into Morris Street, which is just after the Cemetery, the depot entrance is at the end of this street.

North Western Station:- (1) The loco is the Station Pilot.

Directions for Wallgate Goods Depot:- (1) This goods depot is built on the sight of the old L & Y shed, which is just past Wallgate Station, on the way to Southport.

Directions for Horwich Works:- (6) Horwich Works is between Wigan and Bolton on the B5238 and the A673. (about 5 miles from Bolton)

SP SPRINGS BRANCH (Continued)

Directions for St. Helens:- (2) St. Helens is about 15 miles South West of Wigan on A571. One loco works the Pilkington Glass Works, the other one works in and around St. Helens Shaw Street Station.

Directions for Warrington Arpley:- (6) All the locos can be seen from Arpley Bus Station, which is almost in the town centre. Also shunters are found working the paper mills yard, which, turning left after the bus station down Wilson Patten St., and turning left over the railway bridge, just before Bank Quay Station, can be seen in the yards to the right.

Directions for Preston:- (2) Locos work in and out of Preston Station, and are stabled in the engineers yard just to the North of The Station.

Directions for Blackpool:- (1) The loco is stabled at Blackpool North N.C.L. Depot which is about $\frac{1}{2}$ mile West of the station down Talbot Road.,

Directions for Blackburn:- (1) The loco is stabled at Blackburn N.C.L. Depot about 1 mile from the station.

Direction for Kirkham:- (1) The loco is stabled at Kirkham Station, which is approx 7 miles West of Preston, via A583 and A585.

SU SELHURST

The stabling points are Waterloo Station, Clapham Junction, Norwood Junction, Redhill, Brighton, Three Bridges, Guildford, Woking, New Cross N.C.L. Victoria Stn.

Directions to Selhurst Depot:- From Selhurst Station cross directly over the road to the depot entrance.

Waterloo Station:- (1) Works in the middle platforms, where the G.P.O. Vans are.

Clapham Junction:- (2) Work the yards just to the West of the station, locos can be clearly seen from the footbridge.

Directions for Norwood Junction:- (5) Turn right outside the main depot onto Selhurst Road, turning right into Tennison Road, the locos are stabled on the right, just before the railway over bridge.

Directions for Redhill:- (3) Locos are stabled at the EMU depot right next to Redhill Station which is 20 miles south of London on A23.

Directions for Brighton:- (1) This loco has workings between Brighton and Newhaven harbour. Loco is stabled on Brighton EMU Depot. Turn right outside the station along terminus road, continuing into Howard Place, turn right into New England Road, turn left into York Grove, turning right at the end into old Shoreham Road. The depot entrance is a gate on the left hand side.

Directions for Three Bridges:- (1) loco is stabled at Three Bridges Station which is approx 1 mile East of Crawley. Three Bridges is approx 8 miles South of Redhill.

Directions for Guildford:- The loco acts as the Station Pilot. Guildford is South East of London via A3.

Directions for Woking:- (2) Loco acts as Station Pilot, Woking is approx 20 miles South West of Guildford,

Directions for New Cross N.C.L. Depot:- (2) The locos are stabled in the N.C.L. Depot adjacent to New Cross Station,. Take the Old Kent Road (A2) out of London, continue into New Cross Road, the station is on the left.

Victoria Station:- (1) The loco acts as Station Pilot.

SW SWINDON

The stabling points are Station, Works and Yard.

All locos excepting those working inside Swindon Works, can be seen from the station, Directions for Swindon Works:- Turn right outside Swindon Station into Station Rd., continuing into Shepherd Street, London Street, Bristol Street, Church Place, turning right into Rodbourne Road. The West gate entrance is on the left hand side just after the railway bridge.

SY SALTLEY

The stabling points are Birmingham New Street Station, Curzon Street N.C.L., Nuneaton, Coventry, Bordesley Green, Kings Norton and Aston.

Directions for Saltley Depot:- Turn right outside Vauxhall & Duddeston Station into Duddeston Road, the depot entrance is on the right hand side, just under the railway bridge.

Birmingham New Street Station:- (1) The loco acts as Station Pilot.

Directions for Curzon Street N.C.L. Depot:- Turn out of New St., Station onto New Street, turn left into High Street, and right into Albert Street, continuing into Curzon Street, the goods depot is in the right hand side.

Directions for Nuneaton:- (2) The loco is stabled at Nuneaton Station. Nuneaton is approx 17 miles East of Birmingham on A47.

Directions for Coventry:- (1) Loco is stabled in a yard to the West of Coventry Stn.

Directions for Bordesley Green:- (1) Loco is stabled in the station yard. Bordesley Green is to the East of Birmingham via B4128.

Directions for Kings Norton:- (1) Loco is stabled in the Carriage Sidings adjacent to the Station. Kings Norton is South of Birmingham on A38 and A441.

Directions for Aston:- (1) Loco is stabled in the goods yard near the station. Aston is approx 2 miles North of Birmingham on A38.

TE THORNABY

The stabling points are Middlesborough Docks, and West Hartlepool

Directions for Thornaby:- Turn left at the end of Thornaby Station approach into Mandale Road, fork left into Middlesborough Road, (A176) the depot entrance is on the left hand side.

Directions for Middlesborough Docks:- (1) Loco is stabled on Middlesborough Station when not working the docks.

Directions for West Hartlepool:- (5) The locos are stabled by the side of the main road on the site of the old steam shed. (A178) Turn left outside Hartlepool Station into Church Street bearing right into Mainsforth Terrace, the entrance is on the left hand side of this road.

There is one loco on loan to The Tees-Port Oil Refinery. This loco can not be seen by either rail or road.

TI TINSLEY

The stabling points are Sheffield Midland Station, Beighton Junction, Sheffield Darnall, Deep Car, Rotherham Masborough Station, West Tinsley, Earls Cement Company,

Directions to Tinsley Depot:- From Sheffield Midland Station, turn right and follow the signs for Rotherham and M1. At the roundabout, at the junction of the M1 take the A631 Maltby Rd., turning right onto B6067 for Catcliff (Brinsworth Rd.,) turn right just after motorway overbridge. The depot is on the left just over railway bridge.

II TINSLEY (Continued)

Sheffield Midland Station:- (2) The locos are Station Pilots.

Directions for Beighton Junction:- (2) Beighton Junction is about 5 miles South East of Sheffield via A57 and B6053. Locos are stabled near to the level crossing.

Sheffield Darnall:- (1) The locos are stabled in the Carriage & Waggon Works yard at Darnall.

Directions for Deep Car:- (1)/ Wadsley Bridge (1) Deep Car is approx 6 miles North West of Sheffield on A616. Locos can be seen at their respective places from this road, (only with Binoculars).

Rotherham Masborough Station:- (2) Locos are stabled at weekends only.

Directions for West Tinsley:- (1) This loco works Attercliff Common Steel Works.

Directions for Earls Cement Co. (Edale):- (1) Edale is 15 miles West of Sheffield on the A625.

TO TOTON

The stabling points are Westhouses, Nottingham Midland Station, and Lenton Yard.

Directions to Toton Depot:- Take the A52 out of Nottingham, turning right to go through Stapleford & Sandiacre. The depot entrance is through a gate on the left near the old Stapleford & Sandiacre Station. The depot is about $\frac{1}{2}$ mile down this road.

Directions for Westhouses:- (1) Westhouse is approx 12 miles North of Nottingham via the A610 and A61 turning on to the B6025 about 1 mile up this road, a broad concrete path leads from the right hand side under the main railway line to the depot.

Nottingham Midland Station:- (2) The locos are stabled in a yard to the East of the Station.

Directions for Lenton Yard:- (3) Lenton Yards are about $\frac{1}{2}$ mile from Midland Station heading out on A453 Castle Boulevard.

TY TYSLEY

The stabling point is Banbury.

Directions for Tysley Depot:- Turn right outside Tysley Station and turn right at the end of the bridge, into Wharfedale Road, continuing into Warwick Road, A41. The depot entrance is on the right hand side a short distance along.

Directions for Banbury:- (1) The loco is stabled at Banbury Station. Banbury is approx 35 miles from Tysley on A41, in a South Easterly direction.

WH WATH

Directions to Wath Depot:- The nearest station is Mexborough, Leaving the station continue on the main road, (A6023) into Wath-upon-Dearne. Turn right into Moor Road, off this main road, right in the town centre, a gate and some steps lead down to the depot from the left hand side of this road, just after the railway bridge.

WN WILLESDEN

The stabling points are White City, Kensington Olympia, Watford, Stonebridge Park, Camden N.C.L. & C.S. and Old Oak Junction Sidings.

Directions to Willesden Depot:- Turn right outside Willesden Junction Station, this road, leads directly down to the depot.

WN WILLESDEN CONTINUED

Directions for White City:- Locos are stabled in the sidings outside the White City Stadium.

Directions for Kensington Olympia:- (1) Locos are stabled in a sidings outside the Kensington Olympia Exhibition Hall.

Watford:1) The loco is stabled in the goods shed adjacent to Watford Station.

Directions for Stonebridge Park:- (10) The best way to see these locos is to travel from Euston to Watford on the slow line returning via the fast line. However locos can be seen from Stonebridge Park Station, which is on the North Circular Road.

Directions for Camden N.C.L. & C.S.s:- (1)& (1) Camden is approx $\frac{3}{4}$ mile North of Euston Station, turn left out of Euston Station into Eversholt Street, continuing into Camden High Street, and Chalk Farm Road, the N.C.L. Depot is down on the left.

Directions for Old Oak Junction Sidings:- (1) This loco can be seen from Willesden Junction Station, looking towards Old Oak Common Depot.

WS WORCESTER

The stabling points are Worcester Station and Hereford.

Directions for Worcester Depot:- Turn right outside Worcester Station along a foot path at the end go down the steps and turn left into Tollasine Road, a broad path leads to the depot from the right hand side of this road.

Worcester Station:- (1) The loco acts as Station Pilot.

Hereford Station:- (1) The loco acts as the Station Pilot.

YK YORK

The stabling points are the Station, Dringhouses Yard, and Scarborough.

Directions to York Depot:- Turn left outside York Station along Station Road, turning left into Loeman Road, the depot entrance is on the right hand side, after the new York Railway Museum.

York Station:- (2) The locos are Station Pilots.

Directions for Dringhouses Yard:- (2) Stabled in the yards to the South of York Station.

Directions for Scarborough:- (2) in Summer (1) in Winter. Stabled at Scarborough Station.

We have tried to list all the major stabling points in the Country. If we have missed any out, or you know how to give better directions, please inform Mr. H. Howells 44, Stanwell Road, Swinton, Manchester, M27 1TD.
